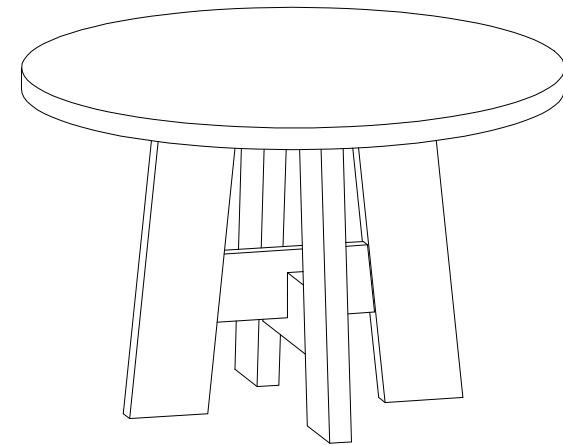


BEVERLEY ROUND WOOD 47" DINING TABLE

DESIGN# SFV2193

Assembly Instructions



Need help?

Feel free to contact us via email or call
if you have any specific questions!

contact us:

cs@safavieh.com

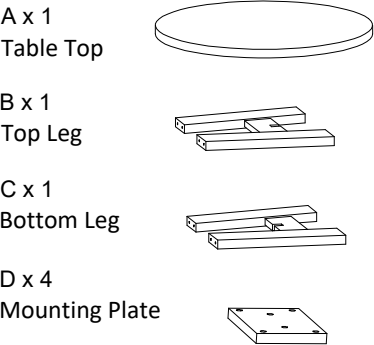
866-422-9070

SAFAVIEH
C O U T U R E

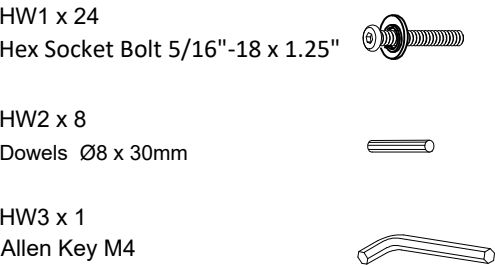
Thanks for bringing
Safavieh Couture into
your home

Everything we make is incredibly
simple to set up, including your new
dining table. You won't need any
additional tools.

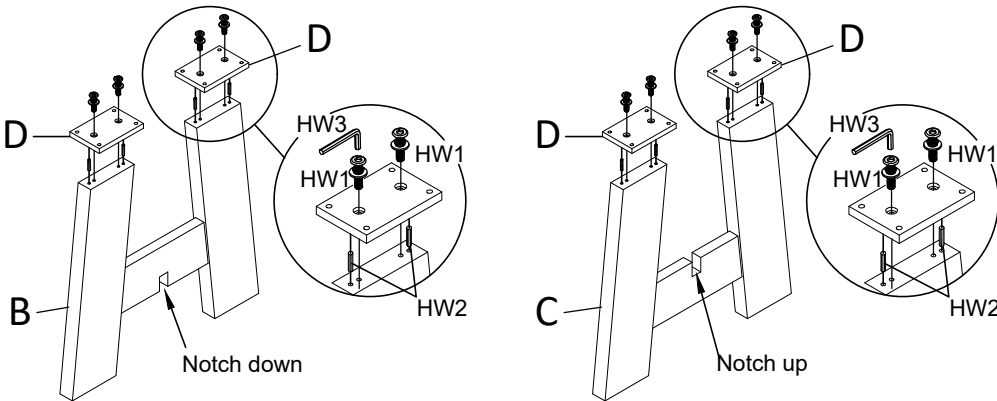
Parts List



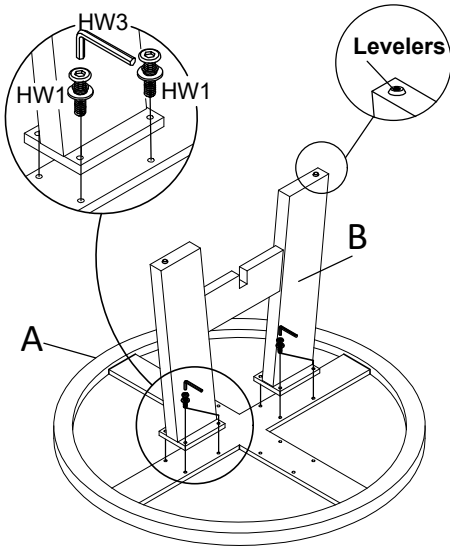
Hardware List



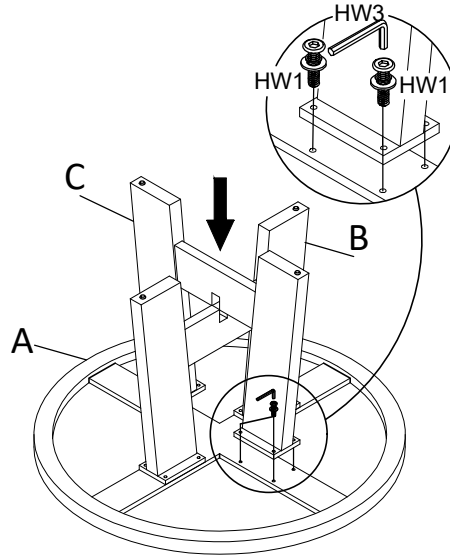
1 Insert the dowels (HW2) into the holes at the top of the legs (B&C). Place the mounting plates (D) on top of the 4 legs. Attach the mounting plates by using the Allen key (HW2) to screw in the Hex Socket Bolt (HW1).



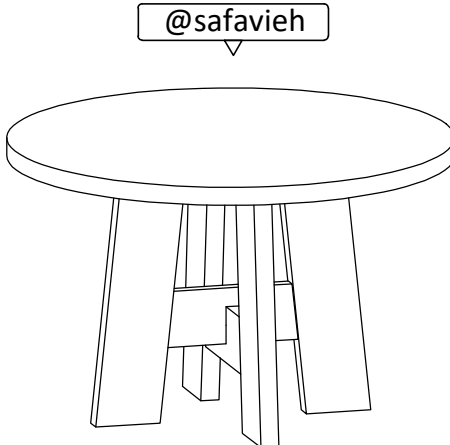
2 Place the table top (A) upside down on a soft surface. Align the screw holes on the table top to the screw holes on the top of leg (B). Attach them by using the Allen Key (HW3) to screw in the Hex Socket Bolt (HW1).



3 Insert the notch on the bottom leg (C) into the notch of the top leg (B). Slide the legs together creating a cross shape, and aligning the screw holes on the table top to the leg (C), as shown below. Attach leg (C) to the table top by using the Allen key (HW3) to screw in the Hex Socket Bolt (HW1).



4 Turn the table upright. Use the levelers on the bottom of the legs to adjust the table as needed to make it level. Place the dining table in the place where you will use it. We'd love to see it - just tag us (we're @safavieh) and use the hashtag #safavieh on Instagram!



@safavieh